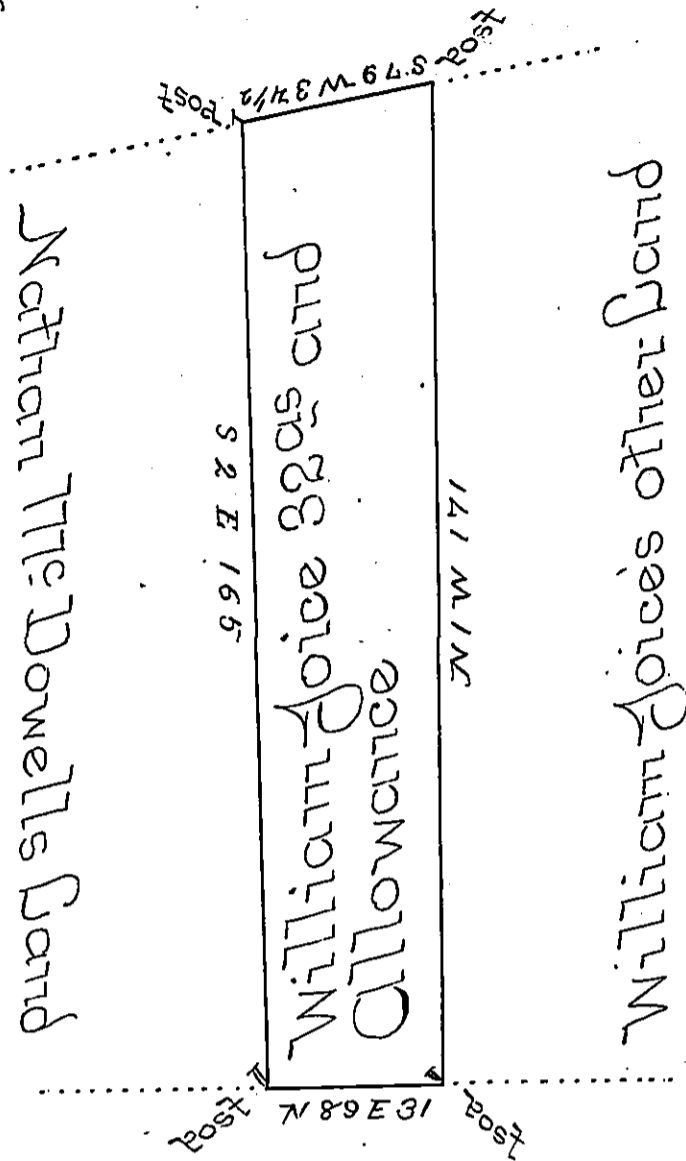


Alex: Batts Herts Land



John Mc Guire's Land

In pursuance of a Warrant dated April 26<sup>th</sup> 1796 there was Surveyed for William Joyce the above described Tract of Land containing thirty two Acres and 30 perches with an Allowance proportioned to Six Percent Situate in Berry Township in the County of Westmoreland Surveyed. Sept<sup>r</sup> 26<sup>th</sup> 1796

By John Moore D.S.

To Daniel Brodhead Esquire }  
 Surveyor Genl. of Penna. }

IN TESTIMONY that the above is a copy of the original remaining on file in the Department of Internal Affairs of Pennsylvania, made conformably to an Act of Assembly approved the 16th day of February, 1833, I have hereunto set my Hand and caused the Seal of said Department to be affixed at Harrisburg, this first day of November 1898.

*James W. Patton*  
 Secretary of Internal Affairs.